



MINISTRY OF ECONOMY
DEPARTMENT OF STATISTICS MALAYSIA

GROSS FIXED CAPITAL FORMATION (GFCF) 2024

Increased to 12.0 per cent with a
value of RM352.3 billion

Annual Growth Rate



12.0% 2024

5.4% 2023

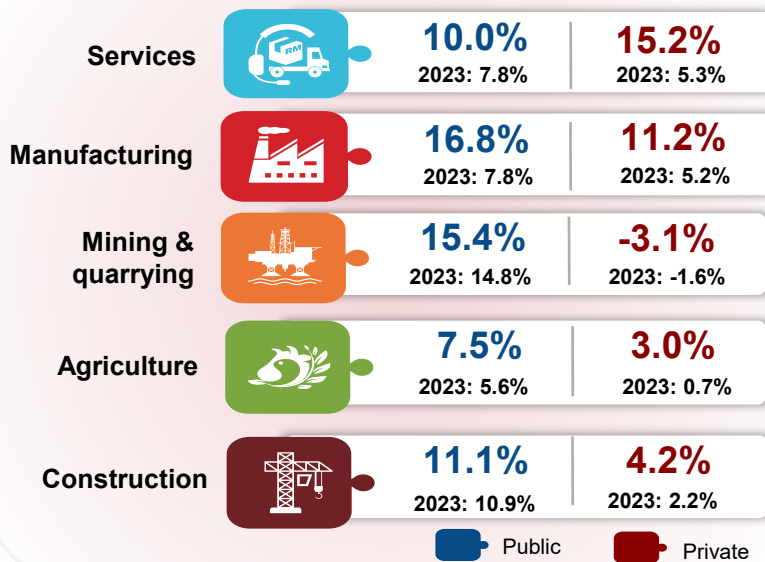
Contribution to GDP



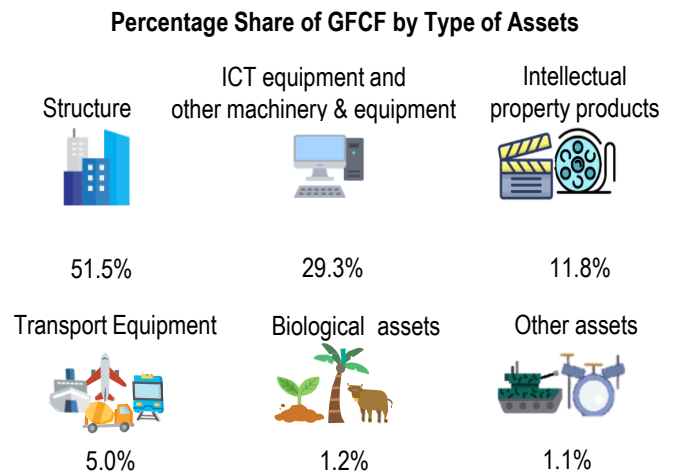
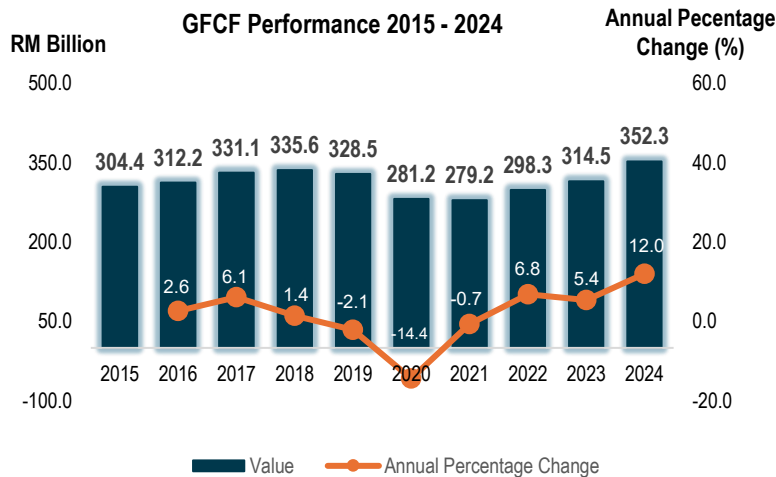
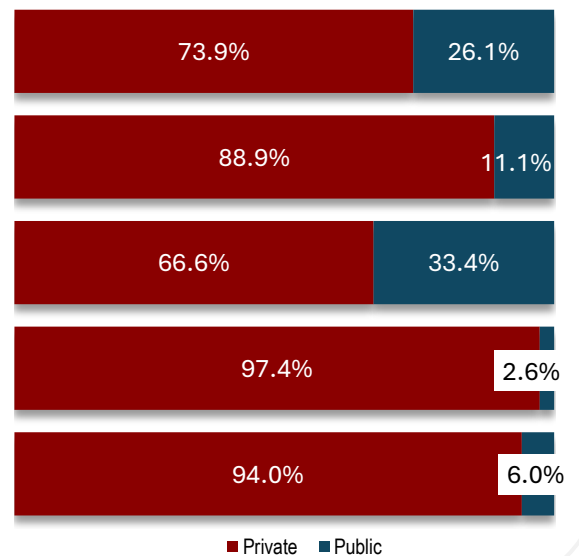
21.3% 2024

20.0% 2023

Annual Growth Percentage of GFCF by Sector and Kind of Economic Activity



Percentage Share of GFCF by Sector and Type of Economic Activity



Source: National Accounts, Gross Domestic Product, Department of Statistics, Malaysia (DOSM)



@StatsMalaysia

